

The parts that need covering.



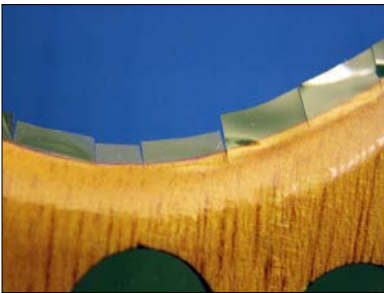
Start by cutting out enough material for each part. Don't worry about trimming the perfect shape. Just cut off enough to cover each part completely



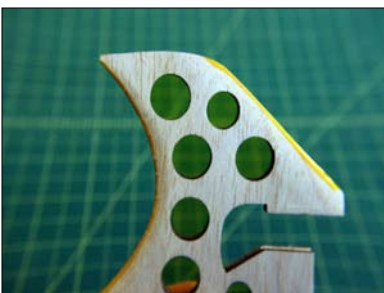
You can start on any part. Here we are starting on the rudder. Apply the material over one complete side first.



Afterwards trim off the excess with scissors or a hobby knife. Leave about 1/16" to 1/8" around all edges. Trim away the parts that will be inserted into the fuselage and need to contact wood to wood.



On the inside curved parts cut little tabs every 1/4" or so. The more complex the curve use more cut tabs.



Iron over the overhanging material around the opposite side.

Then cover the remaining side with more material.

Again trim away the excess and wrap around the other side.



Cover the T-1 part

Trim as usual. leaving 1/8" to 1/4" over the edges. Iron it wrapped around to the other side.



Here you can see it wrapped around to the other side.



Now trim along the duct and iron it in with a trim iron. If you don't have a trim iron then you can use the side or back of the tip of your regular iron.



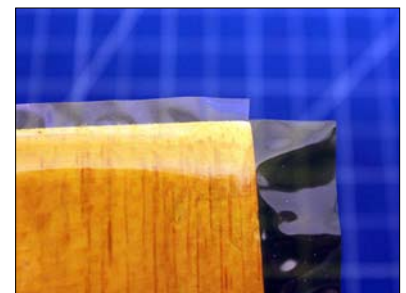
Wrap the battery hatch. Trim as usual.

Notice the corners have been cut away.



Here you can see better that the corner has been cut away.

This will help it wrap around without wrinkles.







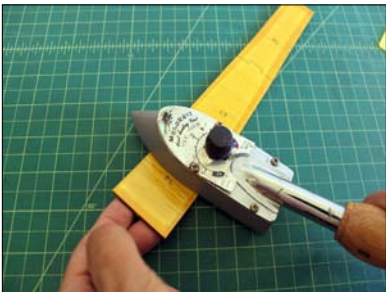
Wrap the top cover using the same method as before. Cut away the corners and wrap it around with the iron.



You may notice that it is difficult to wrap around where the rounded edge meets the squared edge. You can make it easier by making a cut on the overhanging material on that spot.



On this part cover the rest of the back side.



While covering it you need to lift and create a curve on this part so that it will match to shape of the fuselage better.



Only a slight curve will be fine.



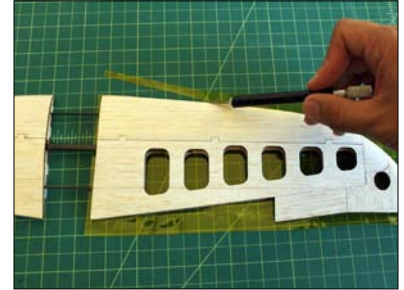
Here you see it matches the fuselage well.

Now on to the wings.

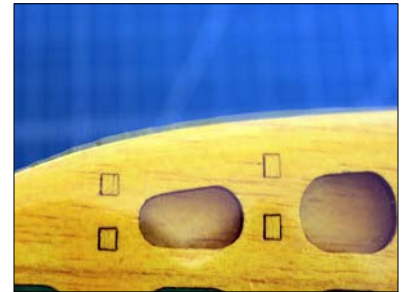
Start with a bottom first.



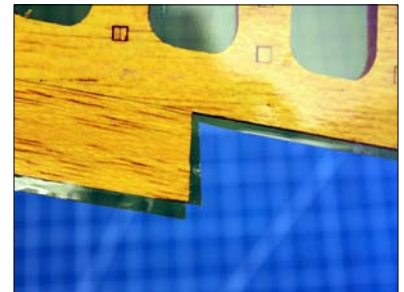
Flipping it over then trimming can make the job easier.



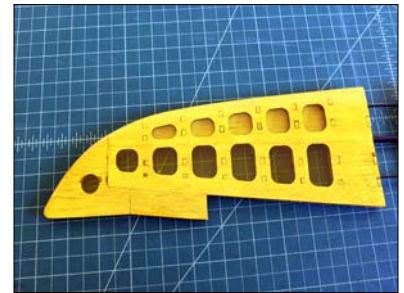
Leave 1/8" as usual.



Cut out the corners

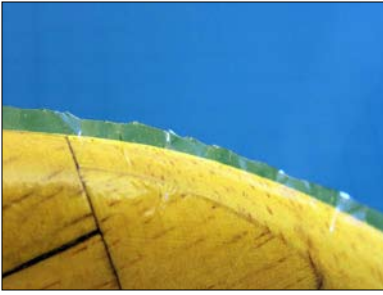


Wrap all the edges over smooth.



Then cover the top.





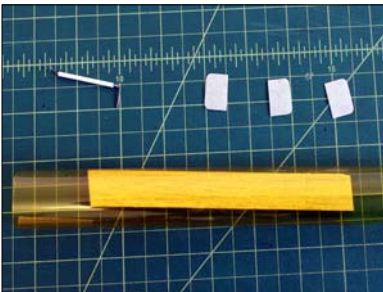
Trim the edges as usual. But since there is more curves on the wing tips you can cut little tabs as you did on the rudder to help if wrap over smoother.



Finish wrapping it over all edges.



Complete both sides.



Remove the torque rods and CA hinges then cover the ailerons.

Use a piece of material wide enough to cover the whole thing with one piece.

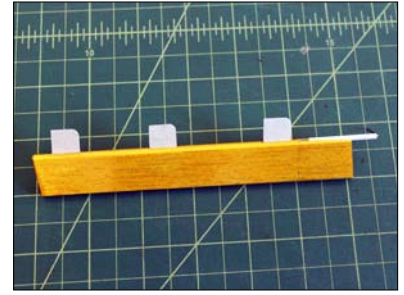


Trim as usual but leave one side wide enough to wrap around to the other side



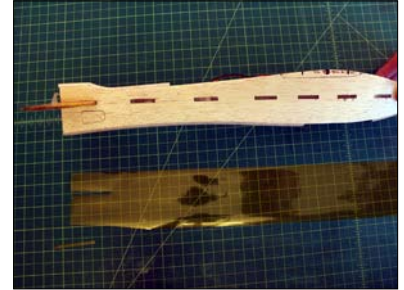
Trim away the torque rod groove and cut open over the slots for the hinges.

Re-insert the hinges and the torque rods.



Now cut out a piece of material 3 1/2" thick by the length of the fuselage side.

Trim away an 1/8" x 2" slot where the horizontal stabilizer is.

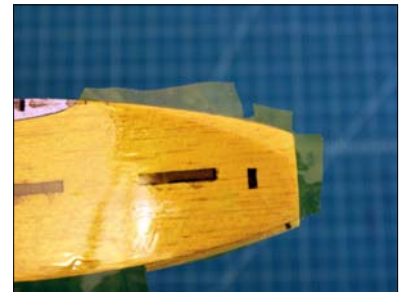


Lay over the material to fit into the slot of the horizontal stabilizer.

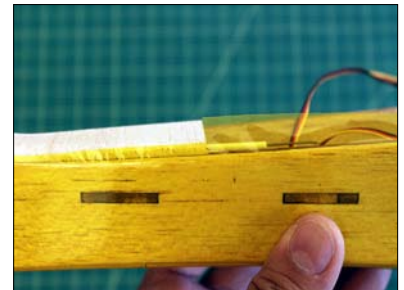
Then cover the rest with the iron.



Trim away the excess a little different that usual. Leave enough material to cover around into the insides of the fuselage where ever there is an opening like over most of the top and the battery cover.



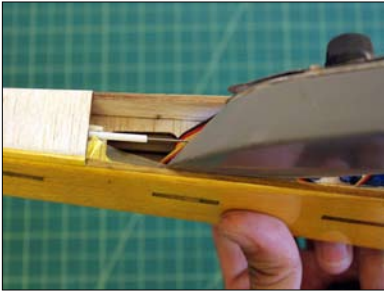
On the back top area trim it with 1/8" excess. While leaving it longer over the open areas.



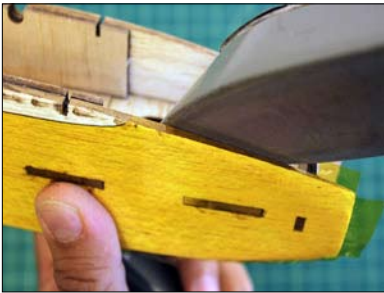
Trim it to cover the rudder cover also.







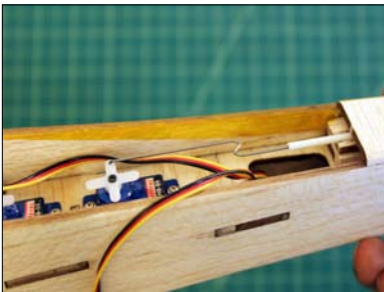
Now iron in the excess material into the fuselage sides.



Iron the excess into the nose area



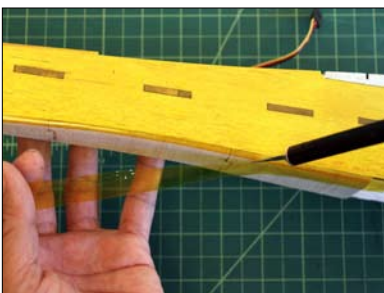
Also iron the excess into the motor area.



As you can see it is covered wrapped around into the fuselage side.



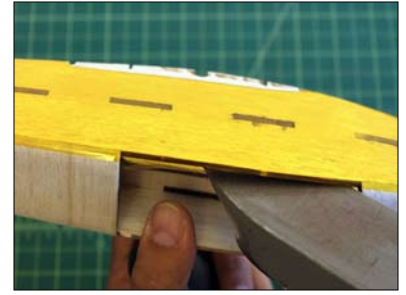
Here you can see it wrapped around into the nose area.



Trim the excess close on the corners where there is no opening.

Then lay out another separate piece to cover those parts after both sides are done.

Wrap the material into the battery slot sides as well.



Here you can see it wrapped into the battery area.



Trim the material around the rudder slot.



Cover the bottom pieces and the any other exposed wood areas that you may have left.



Now you are done with covering for now and continue with building your plane.

Trim with different colors as desired.

